

# OPERATION MANUAL



# POWER CLEAN

---

## WIDE AREA VACUUM

Item Code 19384  
Edition 02 03 27

# MACHINE DATA LOG/OVERVIEW

<b>MODEL</b> _____
<b>DATE OF PURCHASE</b> _____
<b>SERIAL NUMBER</b> _____
<b>SALES REPRESENTATIVE #</b> _____
<b>DEALER NAME</b> _____
<b>OPERATIONS GUIDE NUMBER</b> _____
<b>PUBLISHED</b> _____

<b>YOUR DEALER</b>
<b>Name:</b> _____ _____
<b>Address:</b> _____ _____

# HOW TO USE THIS MANUAL

This manual contains the following sections:

- HOW TO USE THIS MANUAL
- SAFETY
- OPERATIONS
- MAINTENANCE
- PARTS LIST

The HOW TO USE THIS MANUAL section will tell you how to find important information for ordering correct repair parts.

Parts may be ordered from authorized dealers. When placing an order for parts, the machine model and machine serial number are important. Refer to the MACHINE DATA box which is filled out during the installation of your machine. The MACHINE DATA box is located on the inside of the front cover of this manual.

MODEL _____
DATE OF PURCHASE _____
SERIAL NUMBER _____
SALES REPRESENTATIVE # _____
DEALER NAME _____
OPERATIONS GUIDE NUMBER _____
PUBLISHED _____

The model and serial number of your machine is on the bottom back-end of the machine.

The SAFETY section contains important information regarding hazard or unsafe practices of the machine. Levels of hazards is identified that could result in product or personal injury, or severe injury resulting in death.

The OPERATIONS section is to familiarize the operator with the operation and function of the machine.

The MAINTENANCE section contains preventive maintenance to keep the machine and its components in good working condition. They are listed in this general order:

- Belt/Brush Motor
- Vac Motor and Filters
- Vac Motor Carbon Brushes
- Brush Motor
- Carbon Brush
- Daily Maintenance
- Regular/Periodic Maintenance

The PARTS LIST section contains assembled parts illustrations and corresponding parts list. The parts lists include a number of columns of information:

- **REF** – column refers to the reference number on the parts illustration.
- **PART NO.** – column lists the part number for the part.
- **QTY** – column lists the quantity of the part used in that area of the machine.
- **DESCRIPTION** – column is a brief description of the part.
- **SERIAL NO. FROM** – column indicates the first machine the part number is applicable to. When the machine design has changed, this column will indicate serial number of applicable machine. The main illustration shows the most current design of the machine. The boxed illustrations show older designs. If column has an asterisk (\*), call manufacturer for serial number.
- **NOTES** – column for information not noted by the other columns.

*NOTE: If a service or option kit is installed on your machine, be sure to keep the KIT INSTRUCTIONS which came with the kit. It contains replacement parts numbers needed for ordering future parts.*

# TABLE OF CONTENTS

Machine Data Log/Overview. ....	1
Table of Contents .....	2

## HOW TO USE THIS MANUAL

How to use this Manual.....	1-1
-----------------------------	-----

## SAFETY

Important Safety Instructions .....	2-1
Hazard Intensity Level. ....	2-2
Grounding Instructions.....	2-3

## OPERATIONS

Controls .....	3-1
Machine Operation. ....	3-2
Set Up.....	3-2
Operation. ....	3-2
Cleaning .....	3-2

## MAINTENANCE

Belt/Brush Access.....	4-1
Vac Motor Access & Filters. ....	4-1
Vac Motor Brush Removal.....	4-1
Brush Motor.....	4-1
Carbon Brush. ....	4-1
Daily Maintenance.....	4-2
Regular/Periodic Maintenance. ....	4-2
Wiring Diagram. ....	4-3

## GROUP PARTS LIST

Brush and Drive Group. ....	5-1
Brush Height and Wheel Group. ....	5-3
Vacuum Group. ....	5-5
Handle Group. ....	5-7
Lid/Decal Group. ....	5-9
Electrical Panel and Cover Group.....	5-11
Suggested Spare Parts.....	5-12
Warranty.....	5-13

# IMPORTANT SAFETY INSTRUCTIONS

When using an electrical appliance, basic precaution must always be followed, including the following:

READ ALL INSTRUCTIONS BEFORE USING THIS MACHINE.



To reduce the risk of fire, electric shock, or injury:

Use **only** indoors. Do not use outdoors or expose to rain.

Use **only** as described in this manual. Use only manufacturer's recommended components and attachments.

If the machine is **not working properly**, has been dropped, damaged, left outdoors, or dropped into water, return it to an authorized service center.

**Do not** operate the machine with any openings blocked. Keep openings free of debris that may reduce airflow.

This machine is **not** suitable for picking up hazardous dust.

**Machine can cause a fire** when operating near flammable vapors or materials. Do not operate this machine near flammable fluids, dust or vapors.

**This machine is suitable for commercial use, for example in hotels, schools, hospitals, factories, shops and offices for more than normal housekeeping purposes.**

Maintenance and repairs **must be done** by qualified personnel.

**During operation**, attention shall be paid to other persons, especially children.

**When leaving unattended**, secure against unintentional movement.

**The machine shall only** be operated by instructed and authorized persons.

**When leaving unattended**, switch off or lock the main power switch to prevent unauthorized use.

**Do not** handle the plug or machine with wet hands.

**Do not** unplug machine by pulling on cord. To unplug, grasp the plug, not the cord.

**Do not** use with damaged cord or plug. Follow all instructions in this manual concerning grounding the machine.

**Do not** pull or carry by cord, use cord as a handle, close a door on cord, or pull cord around sharp edges or corners.

**Do not** pull/run machine over cord. **Keep** cord away from heated surfaces.

Connect to a **properly** grounded outlet. See Grounding Instructions.

## SAVE THESE INSTRUCTIONS

# HAZARD INTENSITY LEVEL

The following symbols are used throughout this guide as indicated in their descriptions:

## HAZARD INTENSITY LEVEL

There are three levels of hazard intensity identified by signal words -**WARNING** and **CAUTION** and **FOR SAFETY**. The level of hazard intensity is determined by the following definitions:

### **! WARNING**

**WARNING** - Hazards or unsafe practices which COULD result in severe personal injury or death.

### **! CAUTION**

**CAUTION** - Hazards or unsafe practices which could result in minor personal injury or product or property damage.

***FOR SAFETY: To Identify actions which must be followed for safe operation of equipment.***

Report machine damage or faulty operation immediately. Do not use the machine if it is not in proper operating condition. Following is information that signals some potentially dangerous conditions to the operator or the equipment. Read this information carefully. Know when these conditions can exist. Locate all safety devices on the machine. Please take the necessary steps to train the machine operating personnel.

#### **FOR SAFETY:**

**DO NOT OPERATE MACHINE:**

Unless Trained and Authorized.

Unless Operation Guide is Read and understood.

In Flammable or Explosive areas.

In areas with possible falling objects.

#### **WHEN SERVICING MACHINE:**

**Avoid moving parts. Do not wear loose clothing; jackets, shirts, or sleeves when working on the machine. Use Windsor approved replacement parts.**

# GROUNDING INSTRUCTIONS

## THIS PRODUCT IS FOR COMMERCIAL USE ONLY.

### ELECTRICAL:

In the USA this machine operates on a standard 15 amp 115V, 60 hz, A.C. power circuit . The amp, hertz, and voltage are listed on the data label found on each machine. Using voltages above or below those indicated on the data label will cause serious damage to the motors.

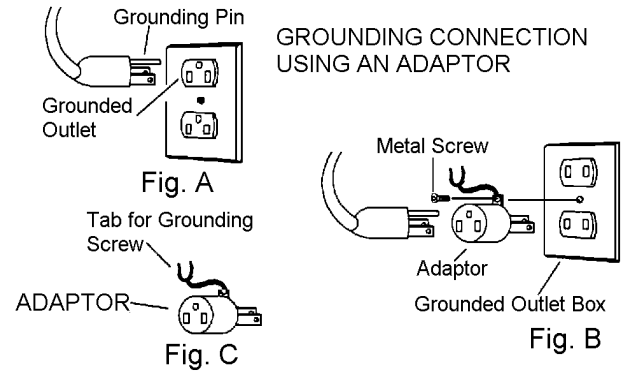
### EXTENSION CORDS:

If an extension cord is used, the wire size must be at least one size larger than the power cord on the machine, and must be limited to 50 feet (15.5m) in length.

### GROUNDING INSTRUCTIONS:

This appliance must be grounded. If it should malfunction or break down, grounding provides a path of least resistance for electric current to reduce the risk of electric shock. This appliance is equipped with a cord having an equipment-grounding conductor and grounding plug. The plug must be inserted into an appropriate outlet that is properly installed and grounded in accordance with all local codes and ordinances.

This appliance is for use on a nominal 120-volt circuit, and has a grounded plug that looks like the plug in "Fig. A". A temporary adaptor that looks like the adaptor in "Fig . C" may be used to connect this plug to a 2-pole receptacle as shown in "Fig. B", if a properly grounded outlet is not available. The temporary adaptor should be used only until a properly grounded outlet (Fig. A) can be installed by a qualified electrician. The green colored rigid ear, lug, or wire extending from the adaptor must be connected to a permanent ground such as a properly grounded outlet box cover. Whenever the adaptor is used, it must be held in place by a metal screw.

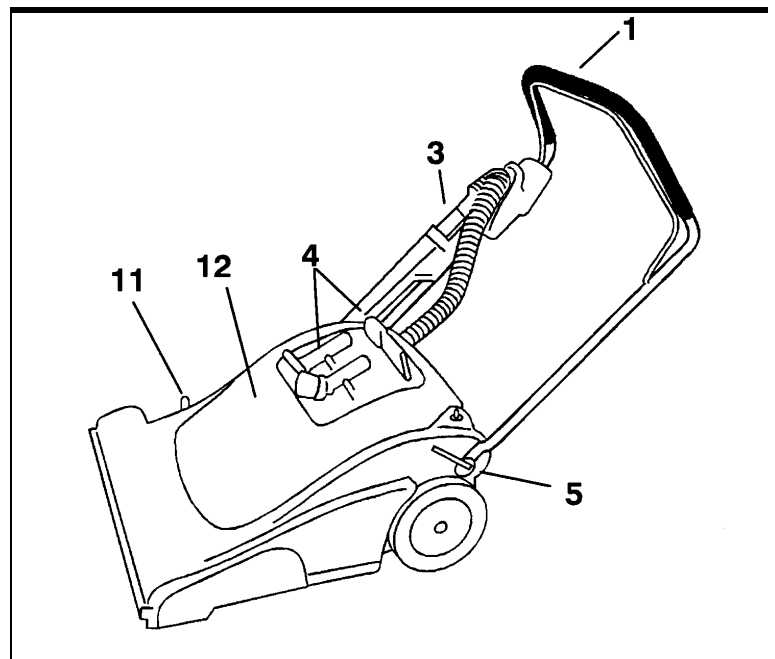
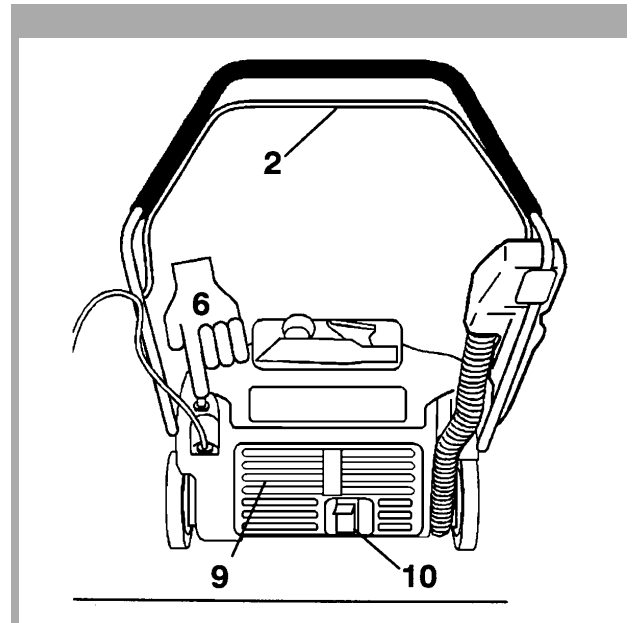
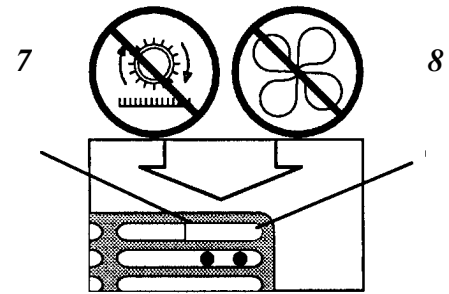


Note: Adaptors are not allowed in Canada.

Improper connection of the equipment-grounding conductor can result in a risk of electric shock. Check with a qualified electrician or service person if you are in doubt as to whether the outlet is properly grounded. Do not modify the plug provided with the appliance - if it will not fit the outlet, have a proper outlet installed by a qualified electrician.

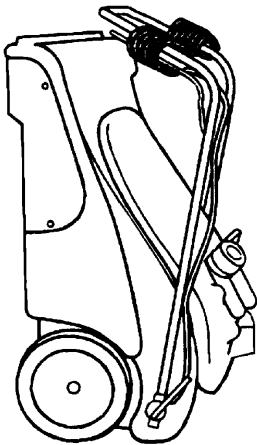
# CONTROLS

- 1 **Main Handle.** Adjusts for operator comfort and storage.
- 2 **Brush on/off lever.** Activates brush when depressed.
- 3 **Accessory vacuum hose and wand.** Allows operator to clean edges, recessed, ledges, upholstery, etc.
- 4 **Detail tools** Dusting brush, crevice and upholstery tools for above the floor cleaning. Dusting brush comes with adapter for attachment directly to hose. Upholstery and crevice tool connect directly to both the hose and the wand. The crevice tool fits loosely on the wand.
- 5 **Handle Adjustment Lever.** Located on the left side of handle. Pull away from handle to loosen, adjust handle and press parallel to handle to
- 6 **Vac on/off switch.** Turns on and off vac motor.
- 7 **Brush motor circuit breaker.** Provides overcurrent protection for the brush motor.
- 8 **Vac motor circuit breaker.** Provides overcurrent protection for the vacuum motors.
- 9 **Exhaust filter.** Filters exhaust air for safe and quiet operation.
- 10 **Accessory hose activation pedal.** Press pedal down to use the accessory hose. Lift up with toe for normal use.
- 11 **Brush adjustment lever.** Allows operator to adjust brush to proper height for the carpet. (1) for low nap carpet, (5) for thick nap. Position (6) is storage.
- 12 **Dust bag cover.** Raise to allow access to dust bag and vac motors.
- 13 **Cloth dust bag.** High filtration cloth bag with zipper opening to access paper bag.
- 14 **Paper bag.** Fits within cloth bag for clean and easy dust removal.



# OPERATIONS

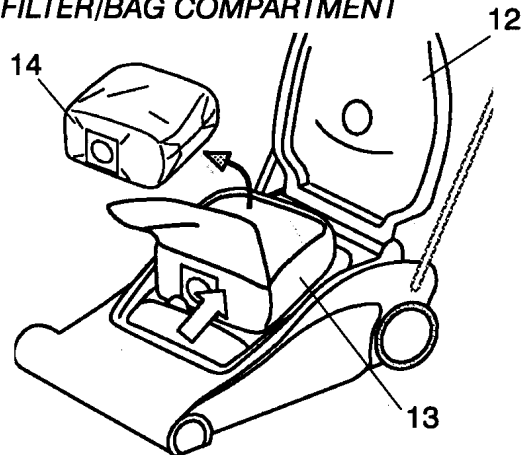
## STORAGE POSITION



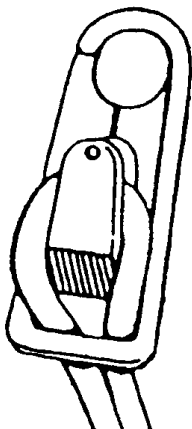
## VACUUM SET UP

1. Take machine out of storage position by lowering onto all four wheels.
2. Adjust handle to comfortable position at waist level by opening adjustment lever on left side of machine and moving handle. Lock back into position by closing adjustment lever.
3. Install cloth filter bag inside the main body by pushing the rubber collar over the chute.
4. Unzip the cloth bag and place the paper bag inside. Push the rubber gasket seal over the chute. Zip cloth bag closed taking care not to damage the paper bag and close lid.
5. Attach the detail tools to the top of the dust bag cover by pressing the appropriate tool into the clips.
6. Take the accessory wand and attach to the hose and insert wand into the wand holster.
7. Strain relief.

## FILTER/BAG COMPARTMENT



## STRAIN RELIEF



**NOTE:** Attach strain relief/cord retainer to the power cord.

1. Make a loop in power cord approximately 12" from receptacle end.
2. Slide cord loop through slot in retainer arm. Pull slack cord back through slot to secure. Attach retainer to handle.



# MAINTENANCE

NOTE: The following service items should be performed by an authorized service facility or authorized service personnel. All parts referred to in these instructions can be identified by using the parts lists and illustrations on the following pages.

## **! WARNING**

**REMOVE MACHINE POWER CORD FROM ELECTRICAL SOURCE BEFORE MAKING ANY REPAIRS OR ADJUSTMENTS TO THE MACHINE.**

### TO ACCESS BELT/BRUSH MOTOR

1. Place machine in the upright storage position.
2. Remove (3) screws holding belt cover to chassis.
3. Loosen brush motor and roll belt off brush pulley.
4. Remove (5) screws holding brush housing to chassis-(3) Located on front of housing, (2) Located rear of housing.
5. Remove (2) screws from each end of brush housing and remove brush assembly.
6. Inspect/replace brush and bearings as required. The brush is equipped with a yellow wear indicator bristles. The brush should be replaced when it wears down to the height of the yellow bristles.
7. When installing belt push down on motor for proper tension.
8. When reinstalling brush, check belt for proper tension.

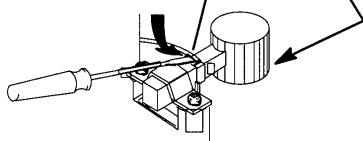
### TO ACCESS AND REMOVE VAC MOTOR AND FILTERS.

1. Open lid cover.
2. Remove (2) screws from each/both vac motor brackets.

**Note:** When replacing carbon vac motor brushes loosen wire terminal **BEFORE** removing screws on bracket.

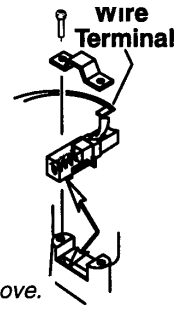
If armature commutator is not concentric, extremely pitted, or grooved the motor will need to be replaced or sent to a qualified service center.

#### Wire Terminal

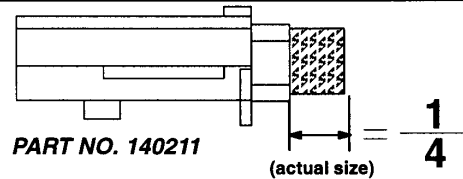


#### Important:

These brushes wear quicker as the length shortens due to increased heat. Spring inside brush housing will damage motor if brushes are allowed to wear away completely.



Note: Place stop in groove.



Periodically check the length of the carbon brushes. Replace both carbon brushes when either is less than 3/8" long.

## **! WARNING**

THE GREEN GROUND WIRE MUST ATTACH THE MOTOR TO THE POWER CORD FOR SAFE OPERATION. SEE THE WIRING DIAGRAM.

NOTE: WHEN REPLACING ELECTRICAL COMPONENT PARTS REFER TO WIRING DIAGRAM FOR PROPER CONNECTION.

NOTE: THE VAC MOTOR IS PROTECTED BY A CIRCUIT BREAKER LOCATED IN THE SWITCH PANEL. THE BREAKER WILL ONLY TRIP UNDER CONDITIONS OF ABUSE.

### BRUSH MOTOR

1. Access belt and brush as described above.
2. Disconnect spring holding frame to brush motor housing.
3. Remove (4) bolts holding motor housing to the chassis and lift out motor asm.
4. Remove brush motor pulley and (2) bolts holding motor to bracket, lift out brush motor.

### CARBON BRUSH

1. Access belt and brush as described above.
2. Remove brush caps. NOTE: BRUSHES SHOULD BE REPLACED WHEN WORN TO 3/8" OR LESS.

NOTE: BEFORE REINSTALLING BRUSH MOTOR BRACKET ASSEMBLY IT'S RECOMMENDED THAT THE REAR SPRING BE RECONNECTED TO THE FLAPPER ASSEMBLY.

NOTE: PART NO. 140212 IF YOU HAVE A MOTOR MARKED "LEESON." PART NO. 14340 IF YOU HAVE A MOTOR MARKED "53617."

# MAINTENANCE

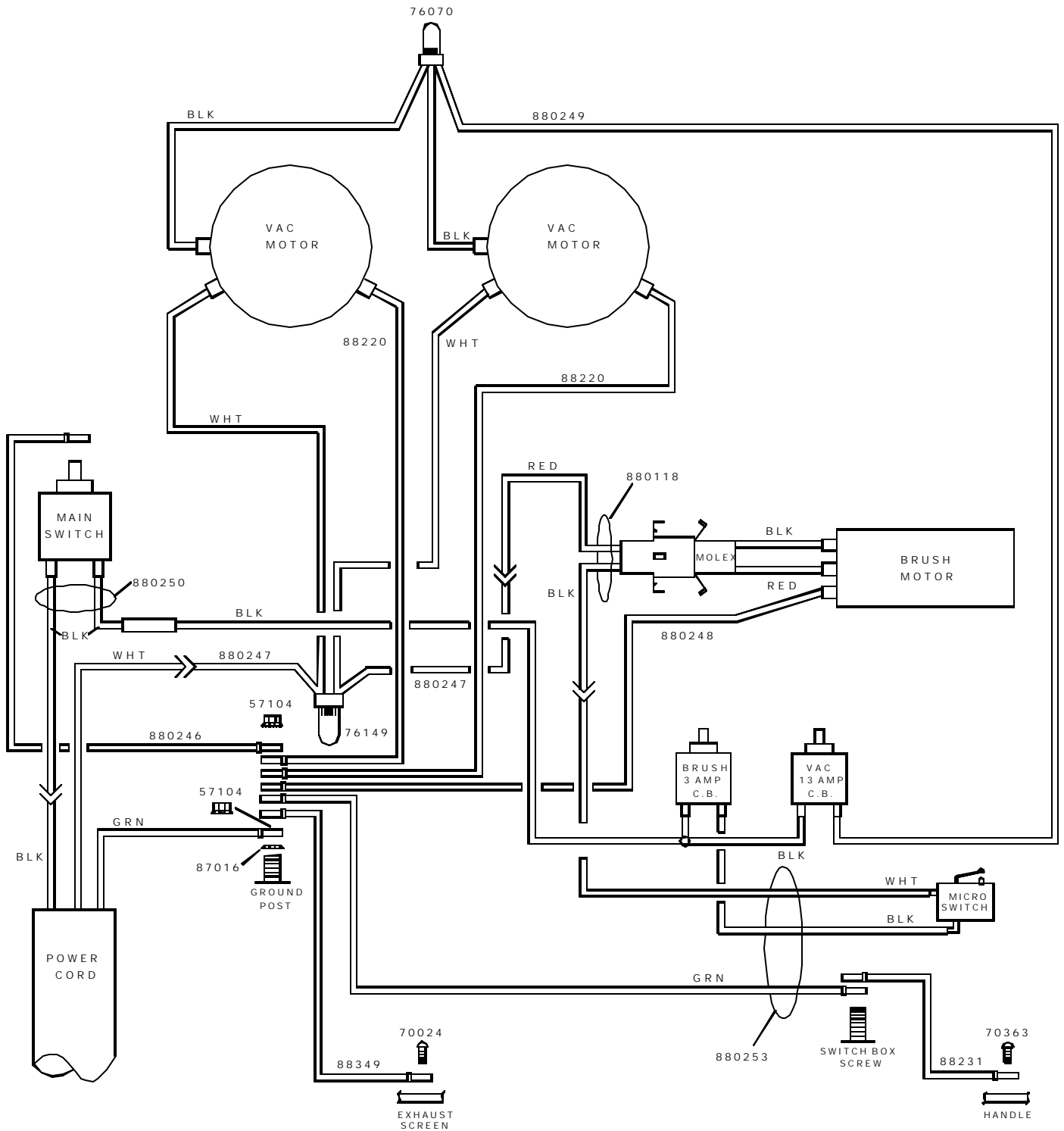
## ***DAILY MAINTENANCE***

1. Shake down bag daily.
2. Check power cord for damaged or frayed insulation.
3. Return brush adjustment lever to "STORE" position when the machine is not in use.
4. Check for and remove any lint or debris around brush and brush housing.

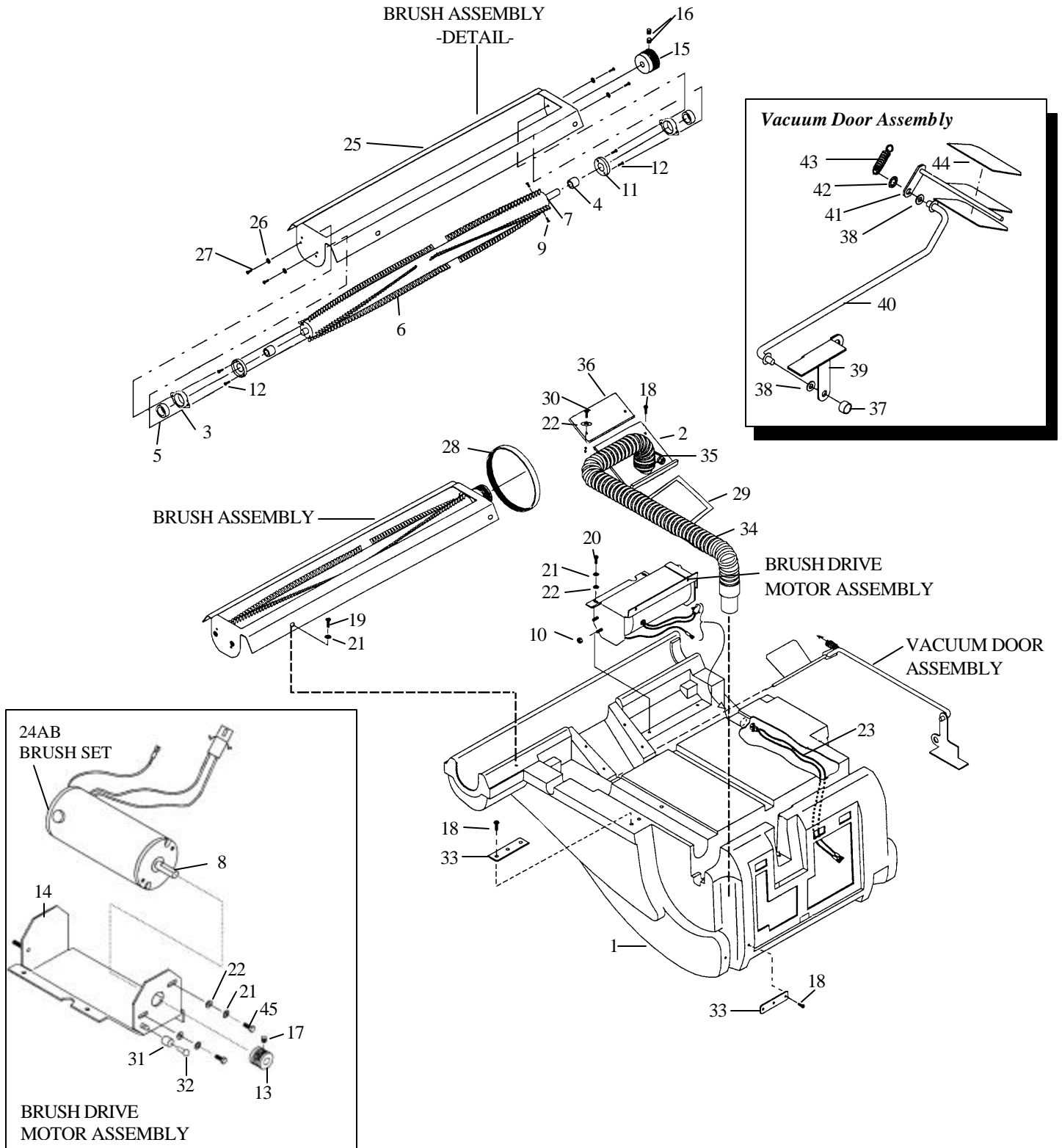
## ***REGULAR/PERIODIC MAINTENANCE***

1. Every 4 to 6 months remove wheels, clean axles, and apply a thin coat of silicone lubricant to axles.
2. The filter bag can be washed twice before losing the filtering capability. This should be done using a mild detergent in cool water and hung up to drip-dry.
3. Inspect and clean vac motor filters.
4. Periodically inspect all hoses, electrical cables, filters, gaskets and connections on your machine. Frayed or cracked hoses should be repaired or replaced to eliminate vacuum loss.
5. The electrical cable must be well insulated, if the cable insulation is broken or frayed, repair or replace it immediately. Don't take chances with electrical fire or shock.

# WIRING DIAGRAM



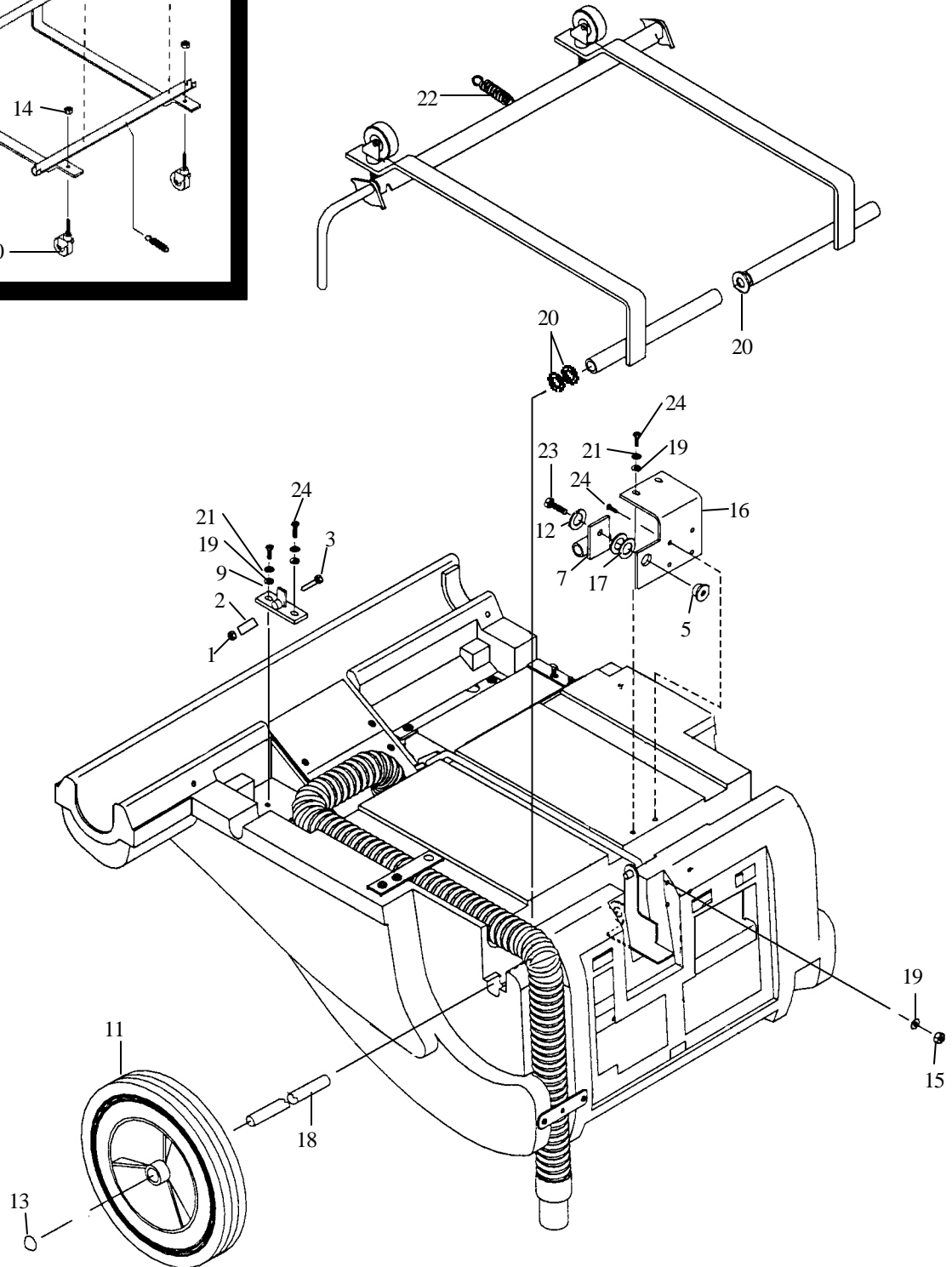
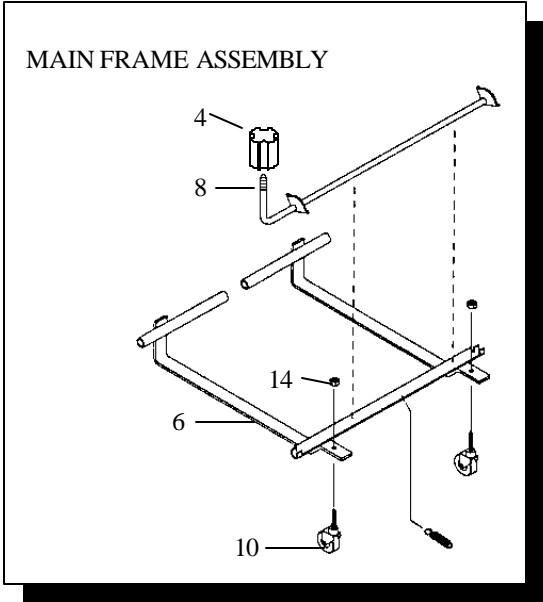
# BRUSH AND DRIVE GROUP



# BRUSH AND DRIVE GROUP PARTS LIST

REF	PART NO.	QTY	DESCRIPTION	SERIAL NO. FROM	NOTES:
1	3-14384	1	BODY, WAV		
2	3-89199	1	WELDMENT, HOSE CONNECT		
3	3-14342	2	BEARING BLOCK		
4	3-73998	2	SPACER, .75OD X .5ID X .5L		
5	3-09019	2	BEARING, 1.125OD X .50ID X .375		
6	3-12039	1	BRUSH		
7	3-03112	1	AXLE, .5OD X 29.94L		
8	3-53623	1	MOTOR ASM, BRUSH DRIVE		
9	3-70043	2	SCR, 10-32 X 5/8 PFHMS		
10	3-57105	1	NUT, 1/4-20 HEX W/ STAR WASHER		
11	3-36197	2	GUARD, THREAD		
12	3-70710	4	SCR, 8-18 X 1/2 PFHST H-L		
13	3-64022	1	PULLEY, POLY V-BELT MOTOR		
14	3-62841	1	PLATE, MOTOR MOUNTING		
15	3-64104	1	PULLEY, BRUSH		
16	3-70119	2	SET SCR, 1/4-20 X 3/8		
17	3-70074	2	SET SCR, 10-32 X 1/4 KCP		
18	3-70114	6	SCR, #10 X 3/4 POLYFAST		
19	3-70085	5	SCR, 1/4-20 X 1/2 PPHMS SS		
20	3-70505	4	SCR, 1/4-20 X 1.0 HHCS PLTD.		
21	3-87025	11	WASHER, 1/4 LCK EXT STAR SS		
22	3-87090	8	WASHER, 1/4ID X 3/4OD		
23	3-880118	1	WIRE ASM, BRUSH MOTOR		
24A	3-140212	1	BRUSH SET, LEESON BRUSH MOTOR		
24B	3-14340	1	BRUSH SET, WINDSOR BRUSH MTR		
25	3-73992	1	SHOE, VAC		
26	3-87016	4	WASHER, #10 LOCK EXT STAR SS		
27	3-70361	4	SCR, 10-32 X 1/2 PHTR PLTD		
28	3-11041	1	BELT, 220 J-6 POLY-V		
29	3-99809	3.42'	FOAM TAPE, 1/8T X 3/4 1SDA		
30	3-70586	2	SCR, 1/4-20 X 3/4 BLK PPHTC		
31	3-73996	1	SPACER, .50OD X .37ID X .44L SS		
32	3-57273	1	NUT, 1/4-20 X 12MM HEX BARREL		
33	3-62650	2	PLATE, VAC HOSE RETAINER		
34	3-39480	1	HOSE ASM, 1.5 X 30.0 BLK VAC		
35	3-20046	1	CLAMP, 2.25" WORM GEAR		
36	3-66329	1	PLATE, ACCESS		
37	3-27063	1	COLLAR, 3/8 SHAFT		
38	3-87030	2	WASHER, 3/8ID X 3/4OD X 1.25		
39	3-66281	1	PEDAL, WAND ACTIVATOR		
40	3-51277	1	LINKAGE, WAND ACTIVATOR		
41	3-29202	1	DOOR, WAV FLAPPER		
42	3-57042	1	NUT, 3/8 PUSHLOCK		
43	3-73240	1	SPRING, EXT. 0.5OD X 2.25L X .063W		
44	3-35224	2	GASKET, FLAPPER WAV		
45	3-70270	2	SCR, 1/4-20 X 3/4 HHCS		

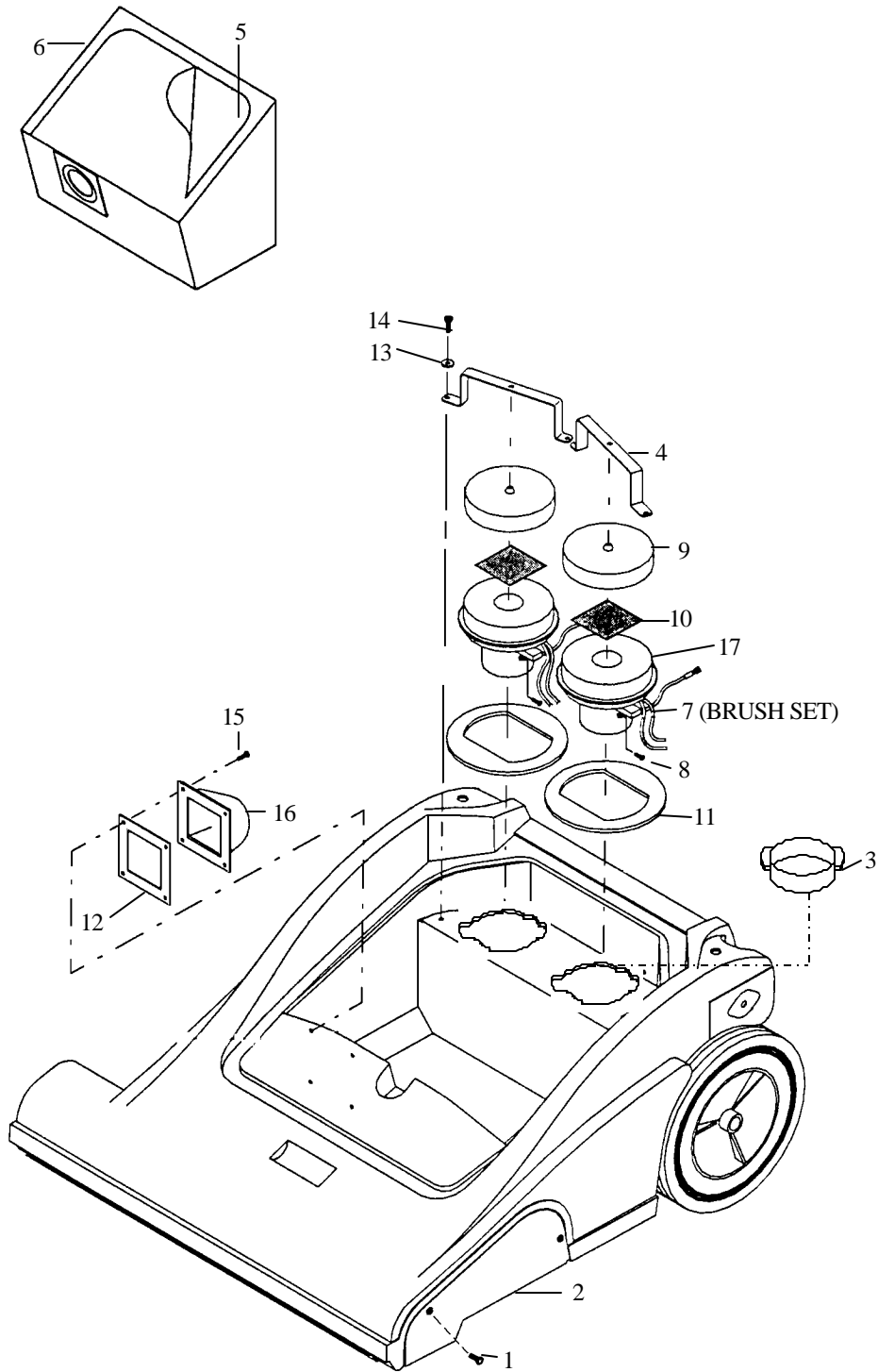
# BRUSH HEIGHT AND WHEEL GROUP



# BRUSH HEIGHT AND WHEEL GROUP PARTS LIST

REF	PART NO.	QTY	DESCRIPTION	SERIAL NO. FROM	NOTES:
1	3-57273	1	NUT, 1/4-20 X 12MM HEX BARREL		
2	3-73996	1	SPACER, .50OD X .37ID X .44L SS		
3	3-70190	1	SCR, 1/4-20 X 1/2 BHCS DL		
4	3-80673	1	KNOB, WITH 1/2-13 F-INSERT		
5	3-140054	1	BUSHING, BRZ 3/8-16 X .74 X .50		
6	3-89131	1	WELDMENT, FRAME		
7	3-140177	1	BRACKET, AXLE HANGER		
8	3-14351	1	BAR, HEIGHT ADJUSTMENT		
9	3-14353	1	BRKT, HEIGHT ADJ RIGHT		
10	3-89094	2	WHEEL, 1-5/8D CUSHION		
11	3-89114	2	WHEEL, 10" DIA.		
12	3-87163	1	WASHER, 3/8 SPLIT LOCK PLTD.		
13	3-41236	2	HUBCAP, 5/8" SHAFT		
14	3-57032	2	NUT, 3/8-16 SERRATED FLG.		
15	3-57047	4	NUT, 1/4-20 NYLOCK PLTD.		
16	3-62623	1	PLATE, AXLE MOUNTING		
17	3-87156	2	WASHER, .75ID X 1.25OD X .125		
18	3-67376	1	ROD, .625 X 25.30 CRS		
19	3-87090	8	WASHER, 1/4ID X 3/4OD		
20	3-87088	3	WASHER, 3/4ID X 1.00 PLTD.		
21	3-87025	4	WASHER, 1/4 LOCK EXT. STAR SS		
22	3-73362	1	SPRING, EXT .50D X 1.75L X .06W		
23	3-70507	1	SCR, 3/8-16 X 3/4 HHCS GR5 PLTD.		
24	3-70505	8	SCR, 1/4-20 X 1.0 HHCS PLTD.		

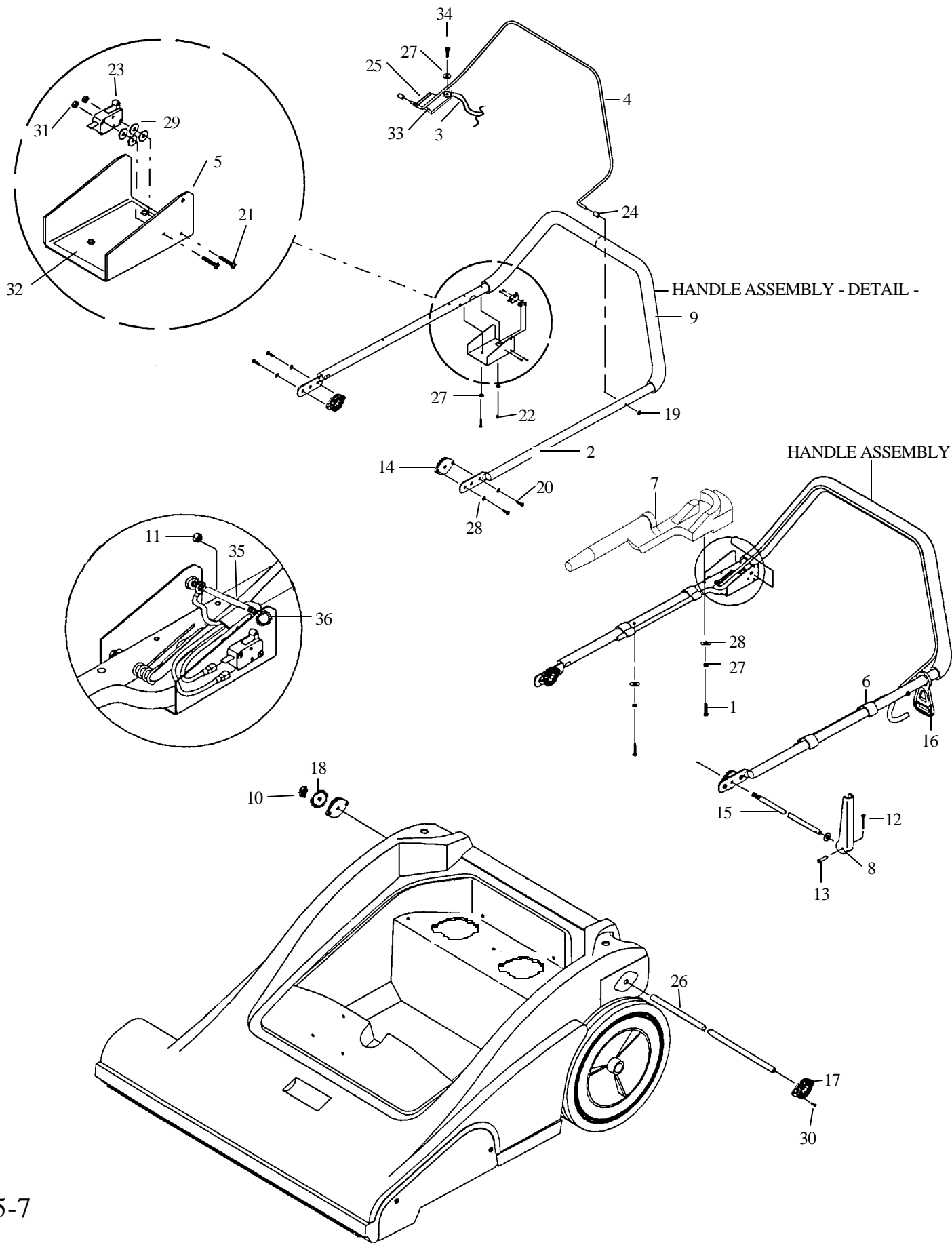
# VACUUM GROUP



# VACUUM GROUP PARTS LIST

REF	PART NO.	QTY	DESCRIPTION	SERIAL NO. FROM	NOTES:
1	3-70586	5	SCR, 1/4-20 X 3/4 BLK PPHTC		
2	3-36185	1	GUARD, BELT		
3	3-27538	2	CAP, MOTOR END VAC-PAC		
4	3-140196	2	BRKT, VAC MOTOR MOUNTING		
5	3-140168	2	BAG, PAPER (PKG OF 10)		
6	3-140164	1	BAG, CLOTH U19855		
7	3-140211	2	BRUSH SET, VAC MOTOR		
8	3-70323	2	SCR, 10-32 X 1/4 PHTR PLTD.		
9	3-34012	2	FILTER, VAC MOTOR		
10	3-73461	2	SCREEN, 5/32 .032T 20GA AL 3X3		
11	3-35204	2	GASKET, 4.0ID X 5.5OD X .38THK PRN		
12	3-35200	1	GASKET, FILTER BAG NECK		
13	3-87025	2	WASHER, 1/4 LOCK EXT STAR SS		
14	3-70505	2	SCR, 1/4-20 X 1.0 HHCS PLTD.		
15	3-70114	4	SCR, #10 X 3/4 POLYFAST		
16	3-29205	1	DEBRIS CHUTE, WAV		
17	3-53783	2	VAC MOTOR, 115V 5.7 1ST		

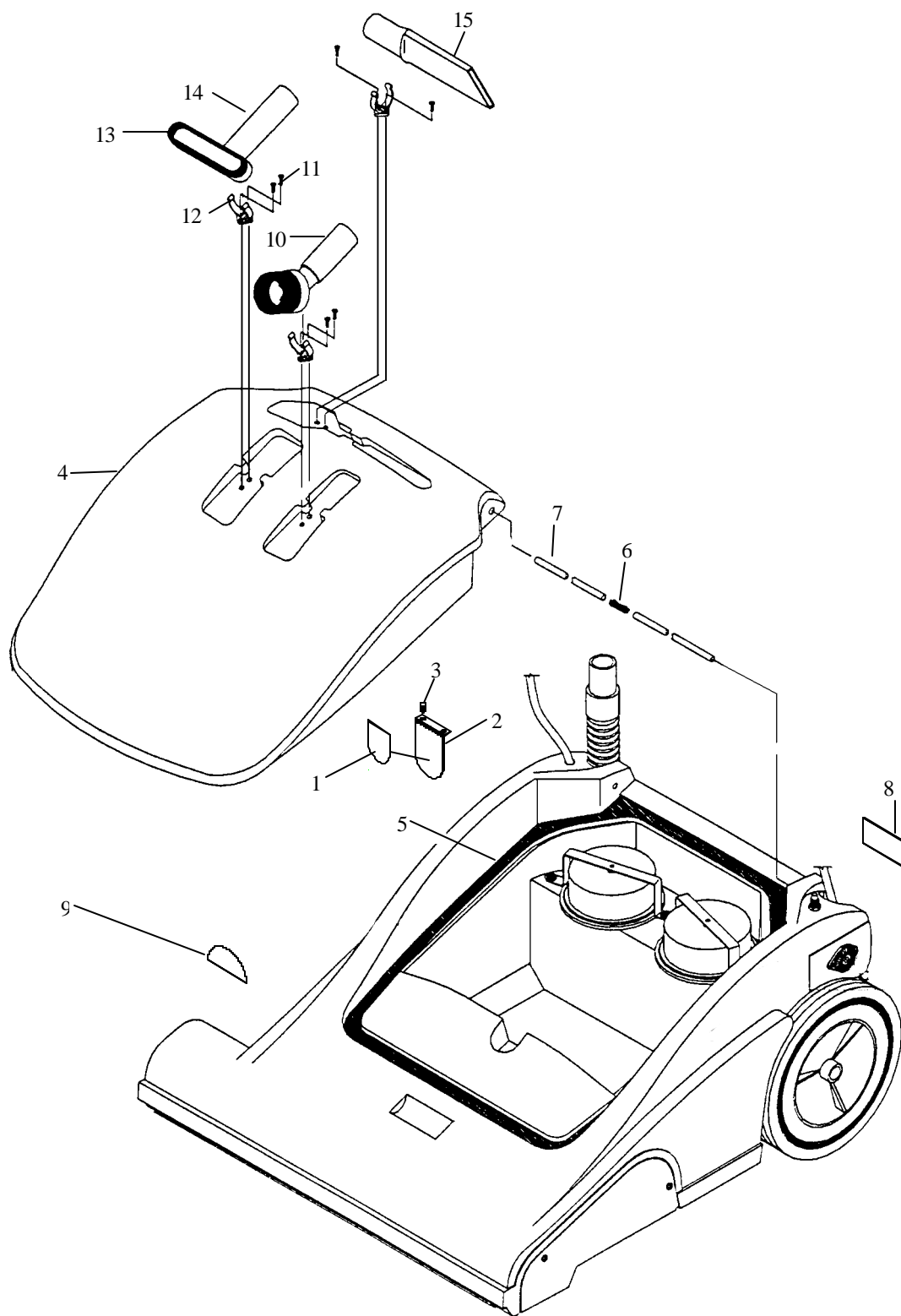
# HANDLE GROUP



# HANDLE GROUP PARTS LIST

REF	PART NO.	QTY	DESCRIPTION	SERIAL NO. FROM	NOTES:
1	3-70253	1	SCR, 10-32 X 1.25 PPHMS		
2	3-38272	1	HANDLE, MAIN		
3	3-88231	1	WIRE, 6" GRN/18 76008 X 76011		
4	3-140309	1	BAR ASM, BRUSH SWITCH		
5	3-140310	1	BRKT, SWITCH MOUNTING		
6	3-27371	4	CLIP, POWER CORD		
7	3-41373	1	HOLSTER, WAV WAND		
8	3-51142	1	LEVER, HANDLE LOCK		
9	3-36104	2	GRIP, HANDLE ADJUSTMENT		
10	3-57022	1	NUT, 3/8-16 THIN NYLOCK SS		
11	3-57105	1	NUT, 1/4-20 HEX W/ STAR WASHER		
12	3-80604	1	RING, RUE COLLAR 1/4 PLTD.		
13	3-66133	1	PIN, CLEVIS 3/16 X 7/8L		
14	3-51184	2	LOCK, HANDLE ADJUSTMENT		
15	3-67374	1	ROD, HANDLE ADJ.		
16	3-73169	1	STRAIN RELIEF, CORD HOOK		
17	3-51254	2	LOCK, HANDLE		
18	3-87080	2	WASHER, .5 X 1.25 FLAT PLTD.		
19	3-57154	2	NUT, CAP 1/4 DIA RETAINING PLTD.		
20	3-70683	4	SCR, 10-32 X 3/8 PHMS SS DL		
21	3-70245	2	SCR, 4-40 X 3/4 PHMS PLTD.		
22	3-70361	2	SCR, 10-32 X 1/2 PHTR PLTD.		
23	3-72093	1	SWITCH, 125VDC SPST N.O.		
24	3-73698	2	SPACER, .50D X .28ID X .38L		
25	3-73843	1	SPRING, TORSION		
26	3-78365	1	TUBE, HANDLE ADJUSTMENT		
27	3-87016	5	WASHER, #10 LOCK EXT. STAR SS		
28	3-87018	6	WASHER, #10 X 9/16OD		
29	3-87068	4	WASHER, 1/8 RIVET BACKUP		
30	3-70517	4	SCR, 8-32 X 1/2 FHMS		
31	3-57163	2	NUT, 4-40 W/ STAR WASHER		
32	3-62839	1	PLATE, SWITCH BOX INSLTR		
33	3-51299	1	LEVER, SPRING STEEL		
34	3-70363	1	SCR, 10-32 X 3/8 PHTR PLTD.		
35	3-70663	1	SCR, 1/4-20 X 3-1/4 HHCS PLTD.		
36	3-87025	1	WASHER, 1/4 LOCK EXT STAR SS		

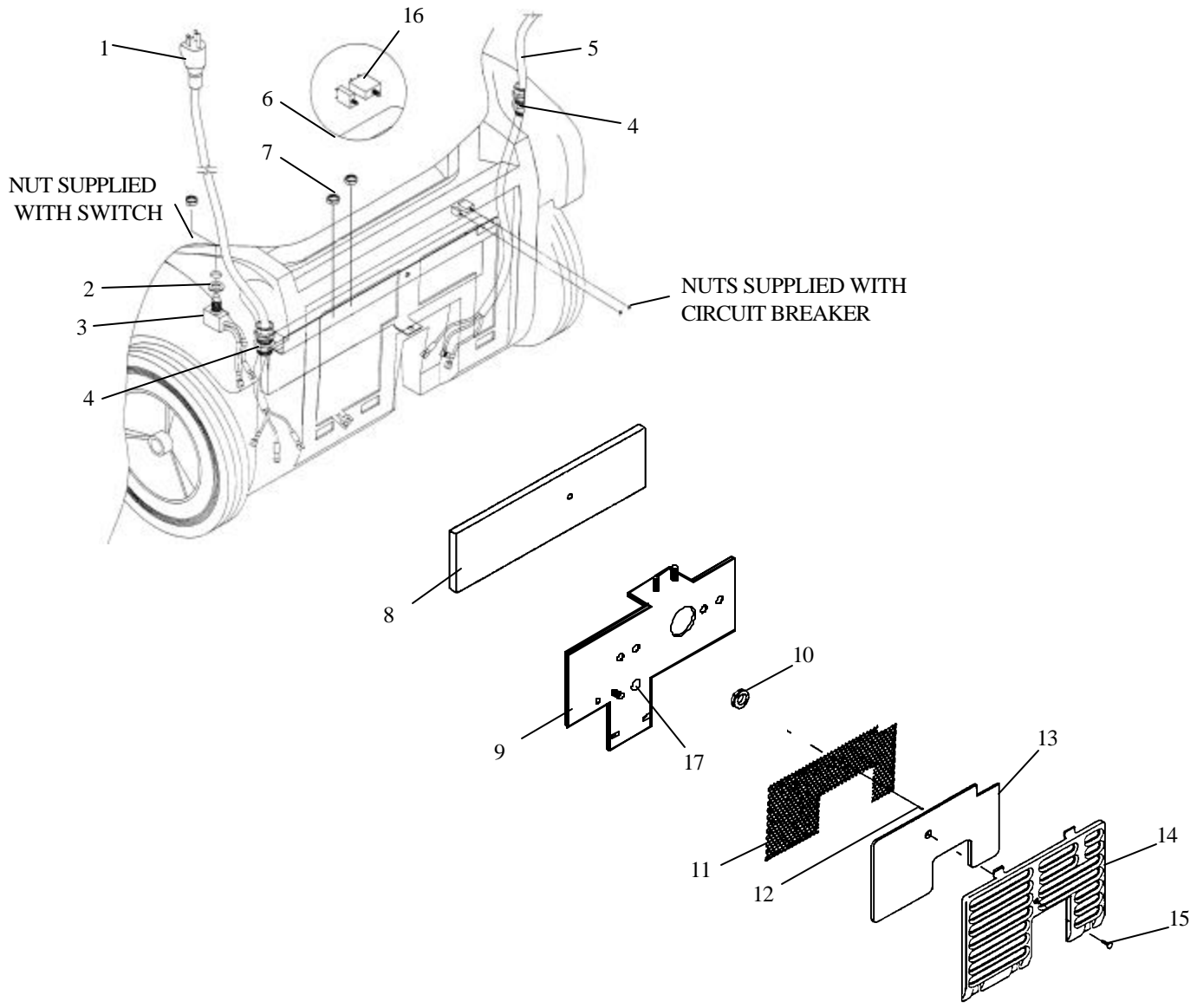
# LID/DECAL GROUP



## LID/DECAL GROUP PARTS LIST

REF	PART NO.	QTY	DESCRIPTION	SERIAL NO. FROM	NOTES:
1	3-35171	1	GASKET, ACCESSORY PORT		
2	3-27674	1	COVER, ACCESSORY PORT		
3	3-70024	2	SCR, #8 X 1/2 SHT METAL SS		
4	3-51335	1	LID, WAV		
5	3-35207	2	GASKET, FOAM 1/2 X 10		
6	3-73838	1	SPRING, .24OD X 2.0 COMP		
7	3-66285	2	PIN, .250 X .75 CRS		
8	3-50776	1	LABEL, WARNING		
9	3-50762	1	LABEL, BRUSH HEIGHT ADJ.		
10	3-02083	1	BRUSH, 3" DUST		
11	3-70233	6	SCR, #10 X 3/8 PH HI-LO PLTD		
12	3-27744	3	CLIP, C 1-1/2 PLASTIC		
13	3-02085	2	BRUSH, UPHOLSTERY		
14	3-02084	1	TOOL, 5" UPHOLSTERY		
15	3-02292	1	TOOL, 11" PLASTIC CREVICE		

# ELECTRICAL PANEL AND COVER GROUP



# ELECTRICAL PANEL & COVER GROUP PARTS LIST

REF	PART NO.	QTY	DESCRIPTION	SERIAL NO. FROM	NOTES:
1	3-23672	1	CORD ASM, 115V		
2	3-87104	1	WASHER, 1/2 EXT. STAR		
3	3-880250	1	WIRE ASM, MAIN SWITCH/BREAKER		
4	3-57040	2	NUT, 1/2 NPT CONDUIT		
5	3-880253	1	WIRE ASM, BRUSH/HANDLE SWITCH		
6	3-14313	1	BREAKER, 13A CIRCUIT		
7	3-57047	2	NUT, 1/4-20 HEX NYLOCK		
8	3-34310	1	FOAM, SOUND INSULATION		
9	3-66323	1	PLATE, ELECTRICAL PANEL		
10	3-36125	1	GROMMET, 3/4ID X 1.38OD		
11	3-73863	1	SCREEN, EXHAUST		
12	3-70024	8	SCR, #8 X 1/2 SHT METAL SS		
13	3-34326	1	FILTER, EXHAUST		
14	3-27738	1	COVER, REAR		
15	3-70610	1	SCR, 1/4-20 X 1.0 BLK THUMB		
16	3-140329	1	BREAKER, 3.0A THERMAL CIR.		
17	3-50279	1	LABEL, GROUND SYMBOL		

## *SUGGESTED SPARE PARTS*

PART NO.	DESCRIPTION	SERIAL NO. FROM	NOTES:
3-11041	BELT, 220 J-6 POLY-V		
3-140341	BAGS, PAPER (PKG. OF 10)		
3-34012	FILTER, VAC MOTOR		
3-34309	FILTER, EXHAUST		
3-140164	BAG, CLOTH		
3-140211	BRUSH SET, VAC MOTOR		
3-140212	BRUSH SET, 90 VDC 1/4HP MOTOR		
3-14340	BRUSH SET, 53616/53617		