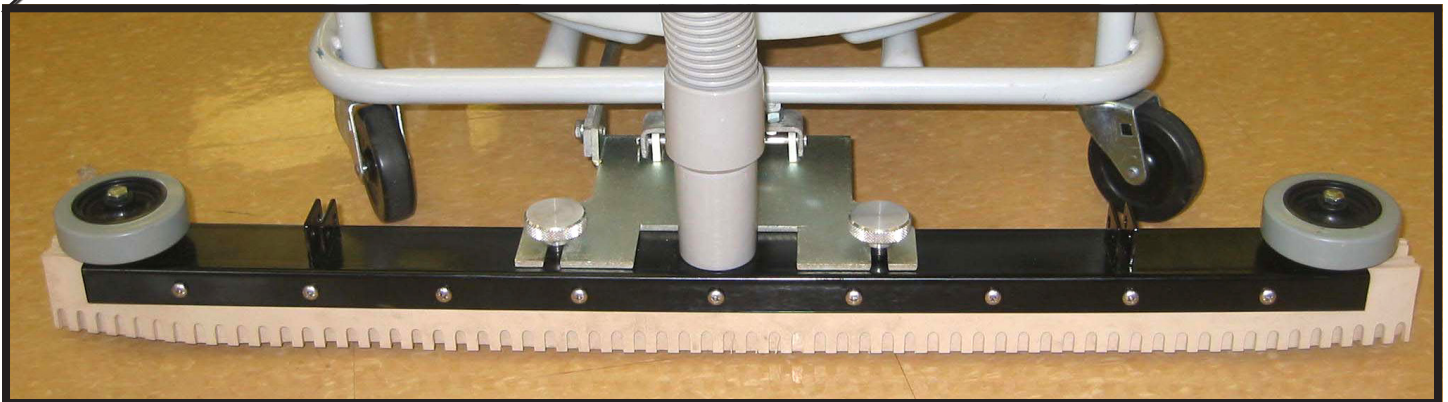


New Targa XL Tilt & Pour Front Mounted Squeegee



Front Mounted Squeegee

Code: 28829



Installation instructions

Required Tools:

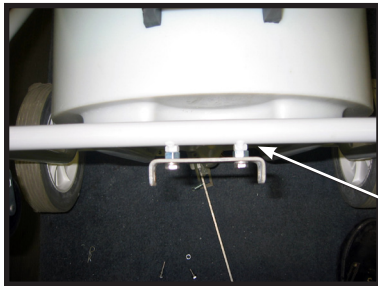
7/16" Wrench or Socket.

3/16" Allen Key (Supplied) # 29102

1. Preparation:

Remove the vacuum head, filters and hose assembly from the vacuum tank.

2. Tilt the vacuum tank dolly assembly backwards on the handle.



3. Install the squeegee bracket hinge (26470) using the following items:

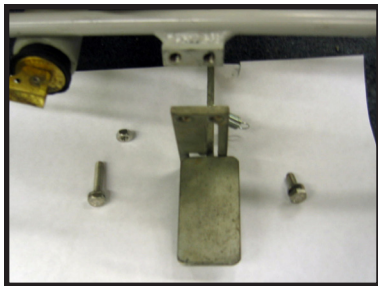
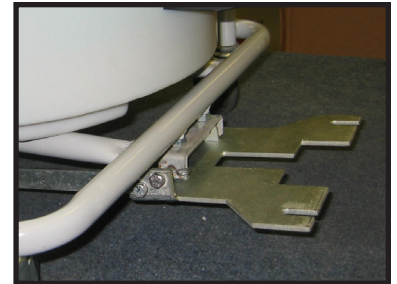
2 x 7140016 Washer Lock

2 x 29101 S/H/C/S 3/4" x 1/4" S/S

2 x 7140561 Nut 5/16" x 14" S/S

Place 5/16" nut between bracket and dolly frame as spacer. Install bolts and lock washers.

4. Stand dolly frame upright and attach the bracket assembly with the clevis pin (26478) and hitch pin clip (26443).

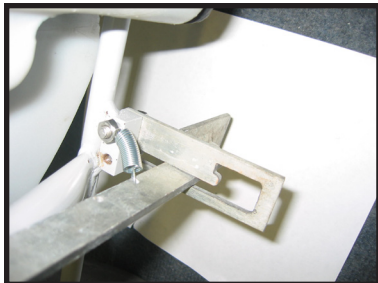


5. Align squeegee lock plate to the block attached at the rear of the frame.

Looking from rear, install 1 1/4" bolt

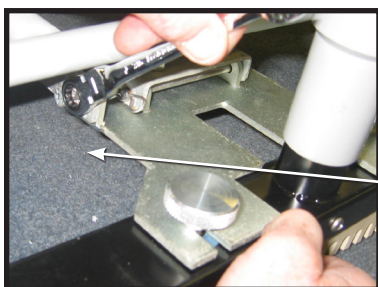
(7140550) and washer (7140016) in left hole.

Install bolt (7140557) and washer (7140016) in right hole.



6. Attach spring (26479) to pedal on second hole from rear and place other end on 1 1/4" bolt.

Fix with 1/4" nut (7140553).



7. Squeegee adjustment

Attach squeegee to mount plate (26474) and tighten nuts.

Adjust squeegee by raising squeegee onto lock plate, loosening bolts on pedal plate/mount plate (26477)/(26474).

Raise squeegee off floor and lock bolts.

Squeegee should be clear of floor when traveling.

Check and adjust as necessary.